

# Lata Hammer Waterfall & Sungai Cabang

Jeram Pandak – Batu Tujuh – Bentong

## 1- Trek to the waterfall

Walking distance: about 45 minutes per way

Difficulty: ♥/♥♥♥♥♥

Program: Day Trip

From Zaini GuestHouse you will be sent by 4X4 to the beginning of the trail (about 30 min.), then you will cross a river and walk a bit up for 45 min. to get to the fresh water of the waterfall. After bathing and enjoying the surroundings, you will be back to Zaini GuestHouse.

Price: **RM45** per person with a minimum of 10 persons



**The journey includes:**

- 1 or 2 guides according to the number of participants
- Transport
- First Aid
- 1 hot drink

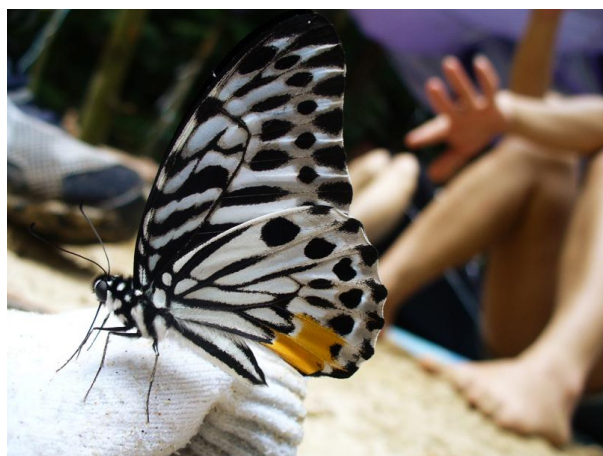
A traditional jungle lunch can be organised on request.

## 2- Camping nearby the waterfall

Walking distance: about 45 minutes per way

Difficulty: ♥/♥♥♥♥♥

Program: 2 days / 1 night



From Zaini GuestHouse you will be sent by 4X4 to the beginning of the trail (about 30 min.), then you will cross a river and walk a bit up for 45 min. to get to the fresh water of the waterfall. There, at the literally sandy beach in the jungle, the camp will be set up. After resting, bathing, fishing, enjoying the surroundings and taking many pictures, you will be served a typical in-the-jungle dinner around a fire camp. The next day, clear the camp after breakfast and back to Zaini GuestHouse.

Price: **RM120** per person with a minimum of 10 persons

**The journey includes:**

- 2 or 3 guides according to the number of participants
- Transport
- First Aid
- Food (4 meals) and drinks
- All Camping equipment (except sleeping bag and torchlight)

